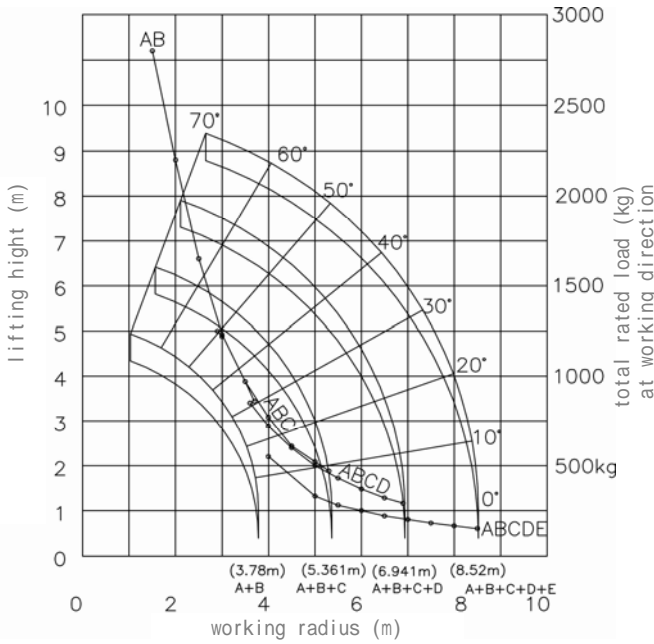
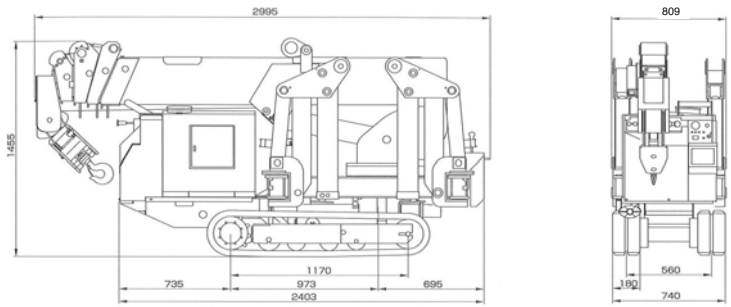


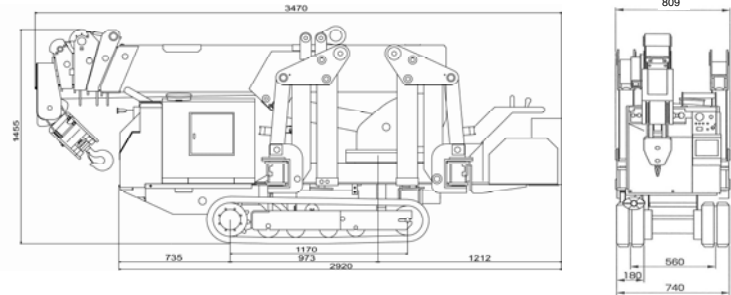
working radius



dimensions for standard



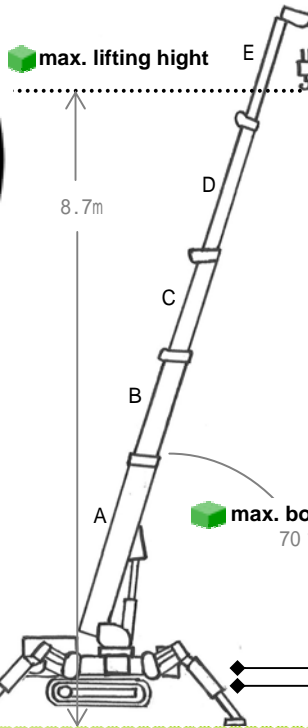
dimensions for electric motor mounted



outrigger positions



max. lifting height



total rated load

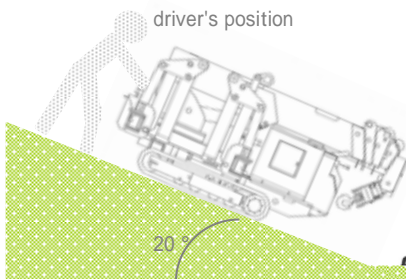
	A+B+C+D+E									
working radius(m)	~ 4.0	5.0	5.5	6.0	6.5	7.0	7.5	8.0	8.52	
working direction (t)	0.55	0.33	0.28	0.25	0.22	0.21	0.18	0.17	0.15	
operating direction (t)	0.49	0.32	0.26	0.23	0.19	0.16	0.14	0.11	0.10	

	A+B+C+D							
working radius(m)	~ 3.6	4.0	4.5	5.0	5.5	6.0	6.5	6.94
working direction (t)	0.85	0.72	0.6	0.5	0.43	0.37	0.32	0.29
operating direction (t)	0.61	0.49	0.39	0.32	0.26	0.23	0.19	0.16

	A+B+C						
working radius(m)	~ 2.9	3.0	3.5	4.0	4.5	5.0	5.36
working direction (t)	1.25	1.22	0.97	0.77	0.61	0.53	0.47
operating direction (t)	1.02	1.01	0.66	0.49	0.39	0.32	0.28

	A+B					
working radius(m)	~ 1.5	2.0	2.5	3.0	3.5	3.78
working direction (t)	2.8	2.2	1.65	1.23	0.97	0.86
operating direction (t)	2.35	1.80	1.41	1.01	0.66	0.56

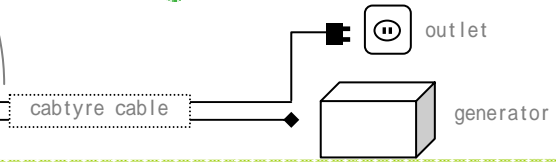
gradability



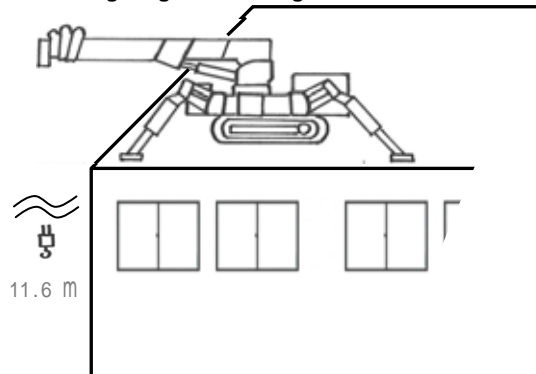
max. boom angle

70°

power sources for electric motor



max. lifting range under the ground



color choices

- mighty blue
- metallic blue
- metallic gray

refer to catalogue or website for better image

how to read model name

D = diesel engine
M = moment limiter
E = electric motor

specifications

model	CR285D	
rated load	2.8t x 1.5m	
maximum working radius	8.5m x 150kg	
maximum lifting height	8.7m	
winch system	hook speed/min	11.3m (at 4th layers/4 falls)
	hoist wire rope	IWRC6 x Fi(29) 8mm x 50m
telescoping system	boom configuration	full automatic 5-sections pentagonal telescopic boom (boom C, D & E slide simultaneously)
	boom length	2.565m ~ 4.186m ~ 5.766m ~ 7.346m ~ 8.926m
	boom telescoping stroke/time	6.36m/22sec
boom hoisting system	boom angle/time	0-70 ° /8sec
swing system	swing angle/time	360 ° continuous rotation/16sec
outrigger	type	manual extend & swing out, lowering by hydraulic cylinder
	max. extended width	3410mm x 3170mm
travel system	type	hydraulic motor stepless speed changer
	travel speed	0-2.2km/h (forwad/back)
	gradeability (design limit)	20 °
	crawler ground length x width	1,170mm x 180mm
	ground pressure	standard
electric motor mounted		50.01[0.51kgf/cm]kPa
engine	model	Yanmar 2TNV70
	type	water cooled, 4 cycle, 2 cylinder, diesel
	displacement	0.570L [570cc]
	continuous rated output	7.9kw(10.59hp)/2,600rpm/min ⁻¹ [10.7ps/2,600rpm]
	fuel/fuel tank capacity	diesel 20L
remote control	method	cable
	speed mode	high/low
	operation	winch, telescoping, hoisting, swing, emergency stop, horn
overall size LxWxH	standard	2,995mm x 809mm x 1,455mm
	electric motor mounted	3,470mm x 809mm x 1,455mm
machine weight	standard	1,750kg
	electric motor mounted	1,880kg
boom extension form		2 hydraulic, 2 wire-link
hook	weight	23kg
	number of sheaves	2
	hook-in system	standard
outrigger extension pattern		maximum extension only
crane operation		hdraulic
remote control	availability	standard
	operating system	cable
moment limiter		option (charged)
tricolored light		option (charged)
electric motor	availability	option (charged)
	type	fan cooled motor
	size	5.5kw, AC
	voltage, frequency, etc.	380V, 50Hz, 4pole, 3phase or 230V/460V, 60Hz, 4pole, 3phase
	power sources	generator, outlet, etc.
maximum lifting range under the ground		max. 11.6m (4 falls)
head lamp		option (charged)
rubber crawler shoe		standard: white free option: black
standard color		standard: mighty blue free options: metallic gray, metallic blue on request: an original color, name print
emergency stop switch		standard
over hoist prevention device		standard
CE standard		diesel engine: applied electric motor: will be applied in 2011
USA standard		diesel engine: will be applied 2011 electic motor: will be applied in 2011
free fall		not available



focus



moment limiter

cable remote controller



electric motor