

 **MIGHTY CRANE**

R&B

CR235GL

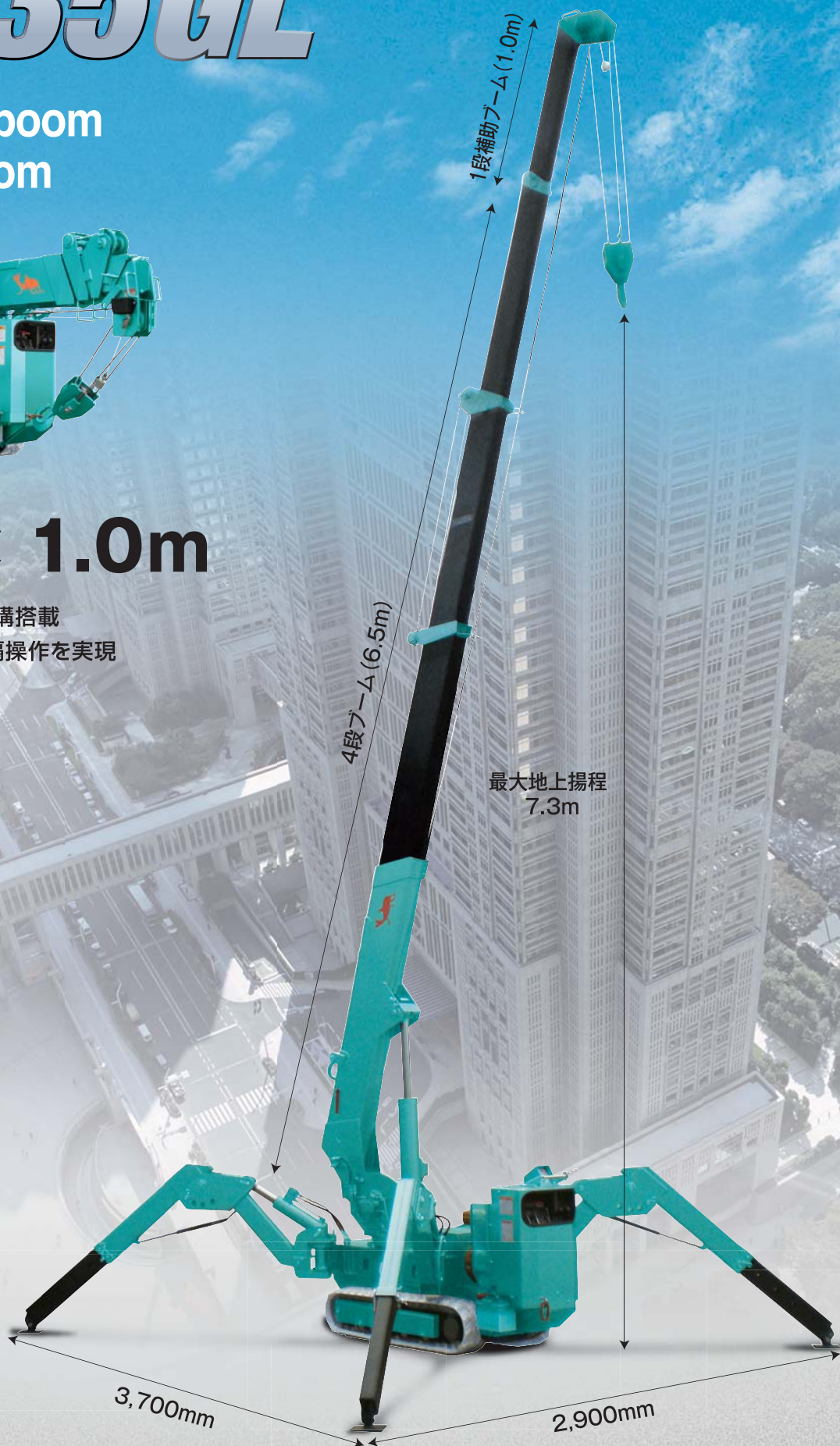
Strong 4 auto boom
+ 1 manual boom



MAX LOADING WEIGHT

2.3t × 1.0m

- コンパクトボディに油圧機構搭載
- 特定小電カラジコンで遠隔操作を実現
- 最大作業半径 7.25m



R&B ENGINEERING Co., Ltd.
www.rbe.co.jp

MIGHTY CRANE CR235GL

■ Specifications

Crane capacity		2.3t×1m
Max.working radius		7.25m×180kg
Max.lifting height (on the ground)		7.3m
Winch system	Hook speed	6.3m/min(3layers, 3falls)
	Hoist wire rope	φ8mm×45m
Telescoping system	Type	Automatic 4-sections+1 manual section pentagonal telescopic boom (Section 3 and 4 slide simultaneously)
	Boom length	2.335-3.755-5.145-6.525-7.525m
	Boom telescoping stroke/Time	4.18m/28sec
Boom hoisting system	Boom angle / time	0~70°/20sec
Swing system	Swing angle / time	360°(continuous)/26sec
Outrigger	Type	Hydraulic cylinder jack
	Max.extended width	2,900mm×3,700mm
Travel system	Type	Hydraulic motor reducer with brake
	Travel speed	0~1.87km/h
	Grade ability	25°
	Crawler ground length×width	1,060mm×180mm
	Ground pressure	40.3kpa [0.41kgf/cm ²]
Engine	Model	SUBARU ROBIN EH25
	Displacement	0.251ℓ [251cc]
	Continuous rated output	4.7kw/1,800min ⁻¹ [6.4PS/1,800rpm]
	Starting method	Electric starting
	Fuel / Fuel tank capacity	Gasoline/6ℓ
Hydraulic	Hydraulic pump	Fixed torque dual piston pump
Remote	Speed mode	High/Low
	Operation	Engine on off, Engine control speed, alarm Winch, Telescoping, Hoisting, Swing, Extending outrigger
Overall length×width×height		2,720mm×665mm×1,395mm
Machine weight		1,570kg

■ Table of Total Rated Load [5-section boom]

When booms A and B are used

Working radius (m)	~1.0	2.0	2.5	3.0	3.48				
Total rated load (t)	2.30	1.60	1.27	0.92	0.67				

When booms A, B and C are used

Working radius (m)	~2.6	3.0	3.5	4.0	4.5	4.78			
Total rated load (t)	1.20	0.97	0.70	0.52	0.42	0.36			

When booms A, B, C and D are used

Working radius (m)	~2.9	3.5	4.0	4.5	5.0	5.5	6.0	6.25	
Total rated load (t)	1.00	0.70	0.54	0.43	0.36	0.30	0.25	0.23	

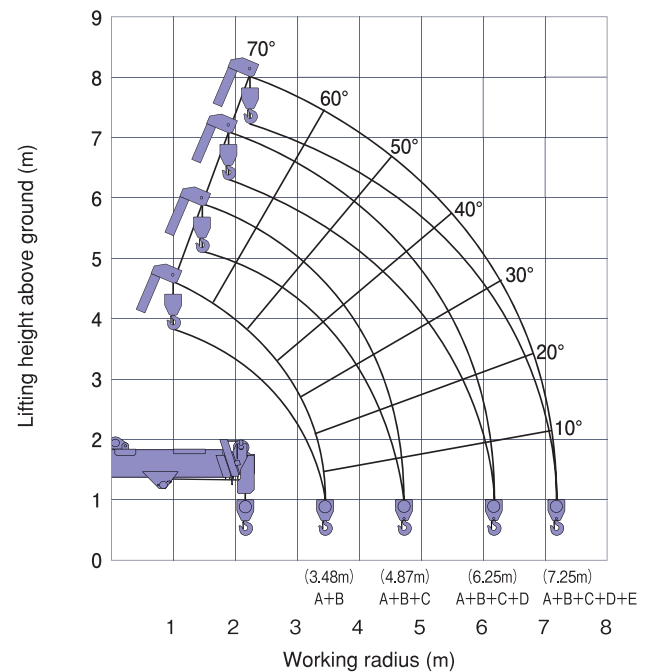
When booms A, B, C, D and E are used

Working radius (m)	~3.4	4.0	4.5	5.0	5.5	6.0	6.5	7.0	7.25
Total rated load (t)	0.70	0.56	0.45	0.36	0.30	0.26	0.22	0.19	0.18

Figure in each table includes 17kg of hook block.

※一部領域内では数値が異なる場合があります。詳しくは取扱説明書をご参照ください。

■ Working range chart

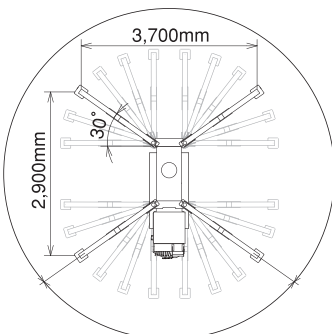
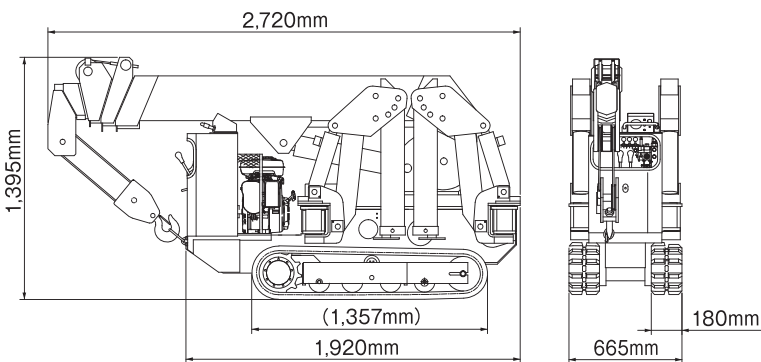


※Working radius and lifting height are based on unknaded condition, excluding deflection of the boom

▲ Safety precautions

- Make sure to read the operation manual before using the product.
- Make sure to extend and set up the outriggers properly before operation. Read the operation manual for the proper outriggers set up.

- Specifications and design are subject to change without notice due to improvement and the product may differ from the descriptions and photos in the catalog.



Cable remote controller

*The above illustration is the image of each dimension and angle.

R&B ENGINEERING Co., Ltd.

Head office / 22-5, Oji 2-chome, Kita-ku, Tokyo 114-0002 Japan
 TEL: +81-3-3919-2060 / FAX: +81-3-3919-2212
 E-mail: info@rbe.co.jp / Website: http://www.rbe.co.jp
 Shizuoka branch / 716-1, Nagasaki, Shimizu-ku, Shizuoka 424-0065 Jap
 TEL: +81-54-346-7211 / FAX: +81-54-346-8686
 E-mail: shizuoka@rbe.co.jp